

Quick guide for importing Ditron Dental Library

Version 4.0

3shape 

Before installing new libraries

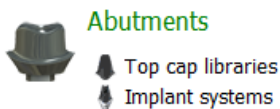
If you already have an old version of Ditron Dental Library installed on your computer you need to follow the instruction below. If this is the first time an Ditron Dental Library is being installed, you can skip to the next chapter of this instruction.

Before updating the Ditron Dental Library it is necessary to remove the old libraries.

- Open the Dental System Control Panel by clicking on the icon



- In the Dental System Control Panel click on the Implant Systems option in the Abutment category



- This will open the overview of all installed libraries in the 3shape installation.



Abutments ▶ Implant systems

Implant system

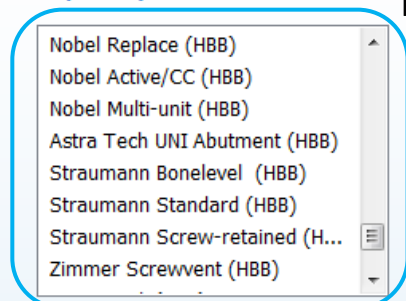


Fig.1



Fig.2

Recycle bin

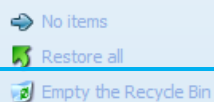


Fig.3

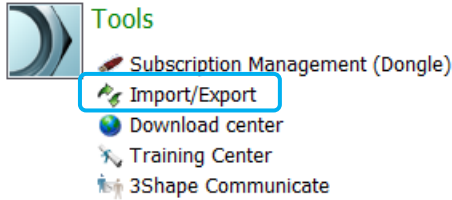
- Select the old Ditron Dental libraries by selecting them in the Implant system box (Figure 1.)
- When all the necessary old Elos Accurate libraries are selected press the Delete button. (Figure 2.)
- Empty the Recycle Bin afterwards. (Figure 3.)

Note: Do not remove folders in the “Imported System” folder in the 3shape installation.

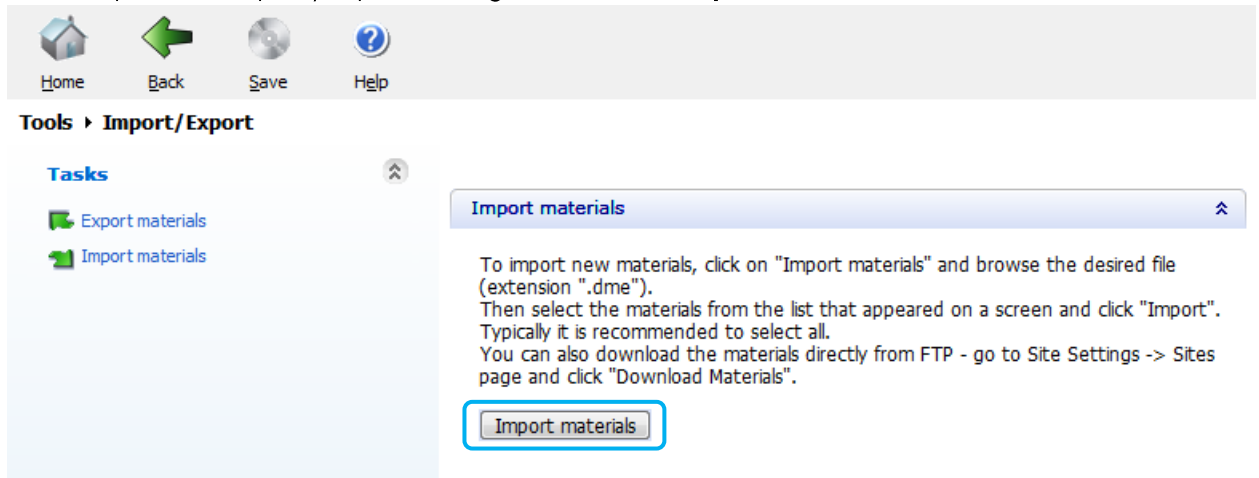
Importing the Ditron Dental Library into 3shape Dental System

After removing previous version of the Ditron Dental Library, the import of the new version can be initiated.

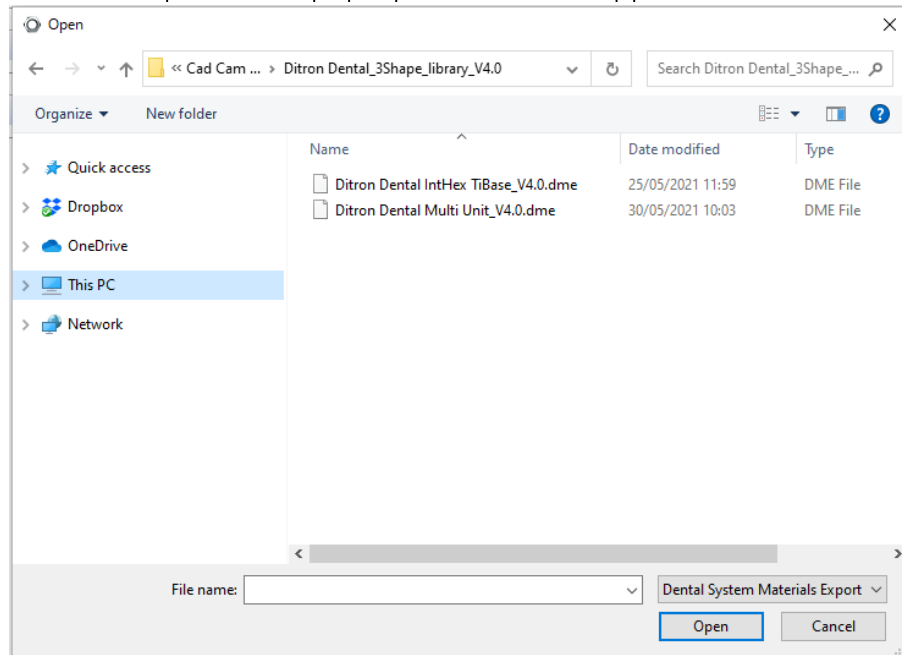
- In the Dental System Control Panel click on the **Import/Export** option in the Tools category



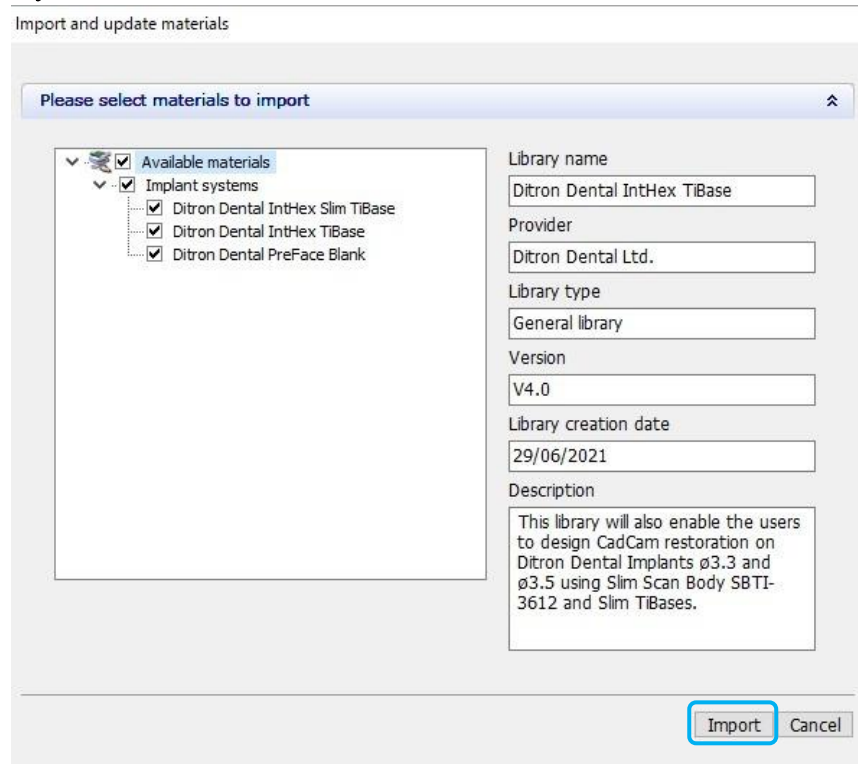
- This will open the Import/Export dialog, click on the **Import materials** button



- Choose the .DME file to import in the pop-up window that appears

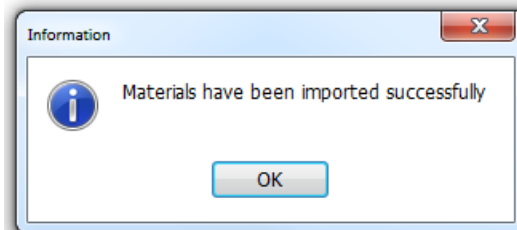


- It is possible to choose which Implants systems to import, by default all are selected. Press **Import** when ready.



- If already installed libraries have the same material file, a popup window may appear. Follow the recommendation from 3shape. The common recommendation is usually to **update**.

When the library has been imported a message will appear.



- Now the Ditron Dental Library has been successfully installed and the system is ready to work with the Ditron Dental products. Upon closing the 3shape software make sure to confirm save otherwise the libraries will not be kept.

